

DATE: 19.05.2020



PROJECT BY  **PEARL**

UNIQUE RETROFIT OF A GLOBAL EXPRESS

COLLINS VENUE CABIN MANAGEMENT SYSTEM ■ HONEYWELL KA BAND WITH
ULTRA HIGH SPEED INTERNET ■ BRAND NEW CABIN DESIGNED BY TIM CALLIES
INCL. STONE-FLOORS AND STATE-OF-THE-ART GALLEY APPLIANCES



www.fai.ag



2000 BOMBARDIER GLOBAL EXPRESS | #9016 | D-AFAL







HIGHLIGHTS

- ✓ Extensive and complete cabin refurbishment Design by Tim Callies to include new soft goods and new wood veneer (mix of light Burlwood and Carbon fibre, polished Smoke Nickel plating of all fixtures, heated stone floors in the galley and VIP lavatory
- ✓ Brand new Collins Aerospace Venue Cabin Management System with three HD-Wall monitors and 6 each Plugin Monitors for use at any single seat
- ✓ State-of-the-art galley appliances similar to the equipment you only will find on brand new Global 6500/7500
- ✓ Honeywell KA Band with Ultra High Speed WiFi Internet and the latest Movie Server equipment
EASA 2020 compliant: ADS-B, CPDLC, FANS 1/A+, WAAS, LPV
- ✓ VIP designer paint with clear coat finished in May 2020



2000 BOMBARDIER GLOBAL EXPRESS | #9016 | D-AFAL



AIRFRAME
SMART PARTS PLUS

5714 hours
2069 landings



ENGINES
JSSI

Rolls Royce BR700-710A2-20
S/N 12133 & 12134
(Coverage 100 % for unscheduled Events and ca. 80% for LLP's)



APU
JSSI

Honeywell RE-220
S/N P-113
(Coverage 100%)

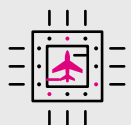
DATE: SEPTEMBER 5TH, 2019



FAI a member of **Aviation Group**

+49-911-36009-375 | +1 561 771 1322 | jetsales@fai.ag | www.fai.ag

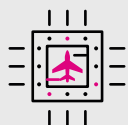
Specifications and/or descriptions are provided as introductory information only and do not constitute representations or warranties. Specifications are subject to verification by the buyer or the buyer's agent. Aircraft availability is subject to prior sale, lease or withdrawal from the market without prior notice.



AVIONICS

- Honeywell Primus 2000 6-Tube
- Triple IC-800 Integrated Avionics Computer
- Triple NZ-2000 FMS
- DL-950 Data Loader USB
- Triple Primus II Nav/Com w/ 25KHz + 8.33 KHZ spacing
- RCZ-835 Standby Comm
- Observer Audio Panel
- EGPWS Honeywell Mk V
- Artex B406-4 ELT
- Primus WU-880 Weather Radar
- TCAS ACSS RT-950 with Change 7.1
- Dual Mode ,S' Diversity Transponder RCZ-833K
- Dual Collins ALT-4000 Radio Altimeter
- Dual Collins HF-9031A HF Comm
- Honeywell SSCVR Cockpit Voice Recorder
- Two Astrotech LC-60 Flight Crew Clocks





AVIONICS

- Honeywell SSFDR Flight Data Recorder
- Dual Honeywell HG2021GD02 Global Positioning System
- Honeywell SD-6000 SATCOM System
- Honeywell High Power Amplifier / High Speed Data Terminal HD-710
- Honeywell Cabin Network A100 WAP Wifi Router
- Honeywell KA Band ultra high speed Internet
- Triple Honeywell HG2001AC20 Inertial Reference Unit
- Quad Honeywell DA-810 Data Acquisition Unit
- Dual Automatic Flight Control System (AFCS)
- Dual Full Flight Regime Auto Throttle
- SB 700-31-030 Batch 3.0, 700-31-034 Batch 3.3
- SB 700-34-053 FANS 1/A+
- SB 700-34-054 SBAS, LPV, WAAS
- SB 700-34-062 ADS-B OUT V2





EQUIPMENT / FEATURES

- Cabin altitude reduction (4,500 ft) for passengers' comfort (SB 700-21-034 R1)
- Securaplane Emergency Lighting System 24 Volt DC
- Securaplane Camera System (5 ea. Cameras)
- Micro QAR with Flash Card Loader
- Customized Alto Sound System including two 8 channel 40W Alto Amplifiers + four Subwoofers 25W RMS Continuous (50W Max RMS) + Ten Alto Mid/High Range speakers 40W RMS
- Electric Window Shades
- Ten Electrical Outlets in Cabin
- Life Rafts with triple frequency ELT's
- Stick Pusher Cancel Function (SB 700-27-025)
- Two hardwired phones in Cabin
- New Wine Cooler
- New Coffee Maker
- New Oven



2000 BOMBARDIER GLOBAL EXPRESS | #9016 | D-AFAL



EQUIPMENT / FEATURES

- Brand New Collins Venue Cabin Management and Audio/Video System with touchscreen panel at ea. seat
- Three Rosen HD-Wall Monitors (16:9) at RH FWD, LH AFT in FWD Cabin and LH AFT in AFT Cabin
- six plug-in video monitors
- Blu-Ray and CD player, USB port
- Avtech CSD-714 SELCAL System
- Venue integrated Airshow ASX; high definition moving maps
- Crew rest area with single executive seat
- Multi-Function Ladder
- Airstair Aft Handrail Extension



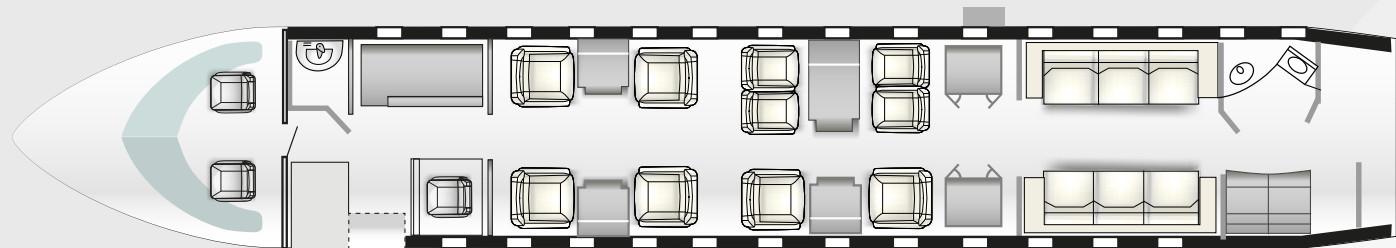
FAI a member of **Aviation Group**

+49-911-36009-375 | +1 561 771 1322 | jetsales@fai.ag | www.fai.ag

Specifications and/or descriptions are provided as introductory information only and do not constitute representations or warranties. Specifications are subject to verification by the buyer or the buyer's agent. Aircraft availability is subject to prior sale, lease or withdrawal from the market without prior notice.

**INTERIOR**

- Full Refurbishment by FAI Technik GmbH, Nuremberg, Germany, June 2019 - April 2020
- New Collins Venue Touchscreen Control at every seat
- Cabin layout arrangement for 12 passengers



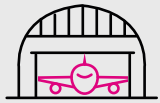
**INTERIOR**

- Four seats in a conference group in Mid Cabin
- Two single seats in a club configuration in Mid Cabin
- Dual Three-Place divans in Aft Cabin, with one Divan with two seating positions certified for TOL
- L/H Crew rest seat
- R/H Galley
- Mid- to Aft-cabin Partition with curtain

**EXTERIOR**

- VIP designer paint with clear coat finished in May 2020





MAJOR INSPECTION STATUS

Inspection	Last performed	Next due
15-Month Check:	Jan - Apr 2020	Jul-2021
30-Month Check:	Jan - Apr 2020	Oct-2022
60-Month Check:	Jan - Apr 2020	Jul-2024
120-Month Check:	Jan - Apr 2020	Jul-2029
240-Month Check:	Jan - Apr 2020	Jul-2039















